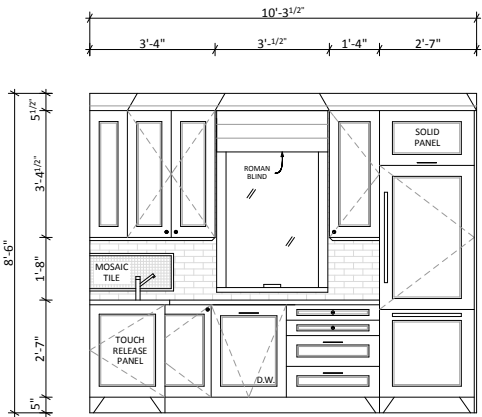


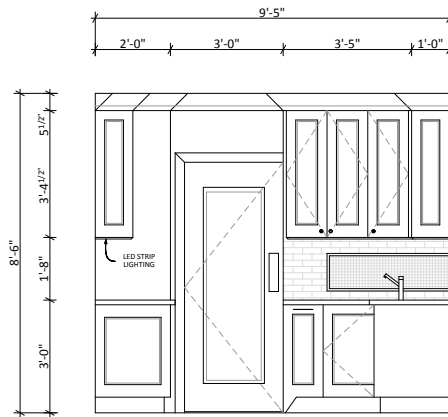
1
A KITCHEN RANGE ELEVATION

- NOTES:
- 30" GAS RANGE
 - CUSTOM PANNELLED HOOD FAN
 - UNDER COUNTER MICROWAVE WITH TRIM KIT
 - STONE COUNTERTOP AND BACKSPLASH TILES
 - BRUSHED FINISH HARDWARE
 - SOFT STRIP LED UNDER CABINET LIGHTING WITH DIMMER
 - LOW LUSTRE LACQUER FINISHED CABINETRY WITH HIDDEN HINGES AND SOFT CLOSE MECHANISM



1
B KITCHEN WINDOW ELEVATION

- NOTES:
- 30" BOTTOM FREEZER REFRIDGERATOR, INTEGRATED
 - FULLY INTEGRATED DISHWASHER
 - SINGLE BOWL S/S UNDERMOUNT SINK
 - BRUSHED FINISH HARDWARE
 - STONE COUNTERTOP AND BACKSPLASH
 - SOFT STRIP LED UNDERCABINET LIGHTING



1
C KITCHEN SINK ELEVATION

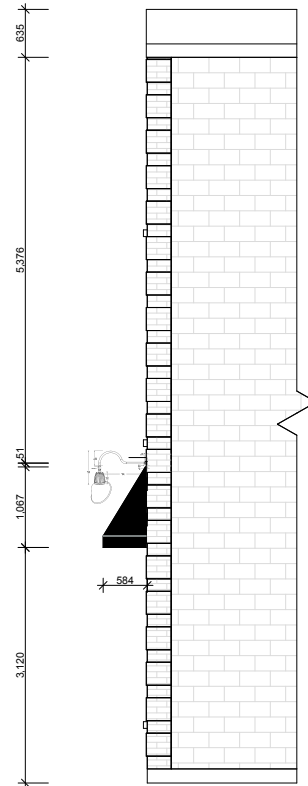
- NOTES:
- PULL-OUT TRASH/ RECYCLING ORGANIZER
 - LOW LUSTRE LACQUER FINISH CABINETRY WITH HIDDEN HINGES AND SOFT CLOSE MECHANISM
 - STONE COUNTERTOP
 - OPEN SHELVING WITH TILE BACK
 - BRUSHED FINISH HARDWARE AND FAUCET
 - SOFT STRIP LED UNDERCABINET LIGHTING

KITCHEN DESIGN

SOUTH ELEVATION



EAST ELEVATION



**SIGN PERMIT DRAWING
CITY OF TORONTO**

EXISTING BUILT-IN
STONE BBQ + COUNTER

PROPOSED WOOD PERGOLA
14'0" x 10'10" + 5' OVERHANG

PROPOSED INTERLOCK
APPROX 132 sqft

PROPOSED INTERLOCK PATH
APPROX 117 sqft

JUMBO FLAGSTONE STEP
APPROX 76 sqft

RANDOM FLAGSTONE
APPROX 40sqft

PROPOSED WOOD PERGOLA
20'0" x 14'0"

EXISTING FLAGSTONES
TO REMAIN

PYRAMIDAL HORNBEAM TREE X 5

EXISTING JAPANESE MAPLE TO
REMAIN

EXISTING
INTERLOCK
PATIO

EXISTING
FLOWER
BED

EX. RETAINING WALL
EX. HEDGE

DN

EX.
FLAGSTONE
STEPS

LANDSCAPE PLAN

0 5 10
SCALE 3/32" = 1'0" FT

AUG. 13, 2014
DRAWN BY D.K.